

# City Council Redistricting

City of Terre Haute, Indiana  
2020 Census



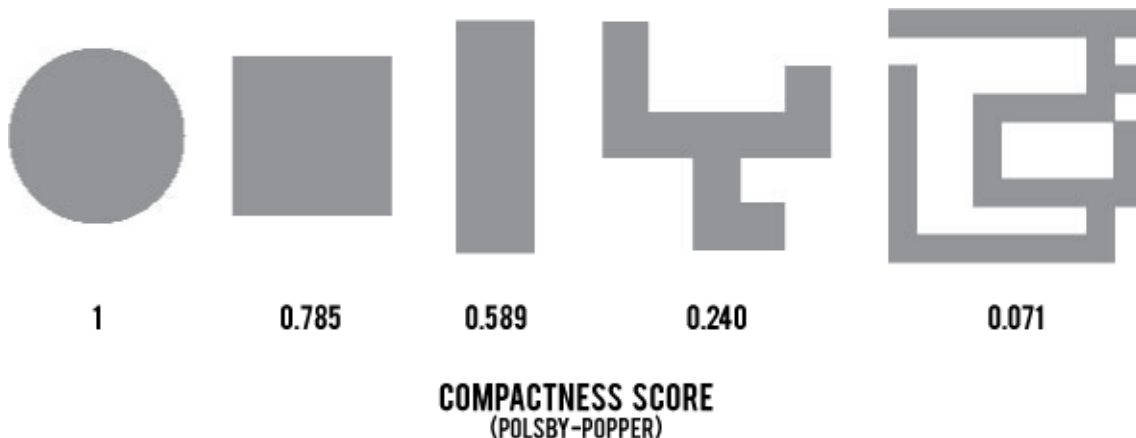
# Basic Statutory Requirements

- 6 Districts
- Reasonably Compact
- Contiguous Territory
- Equal Populations
- Do not cross precinct boundaries
- Ordinance enacted by City Council
- Does not “displace” current council member
- Complete by December 31, 2022

*Reference: I.C. 36-4-6-3*

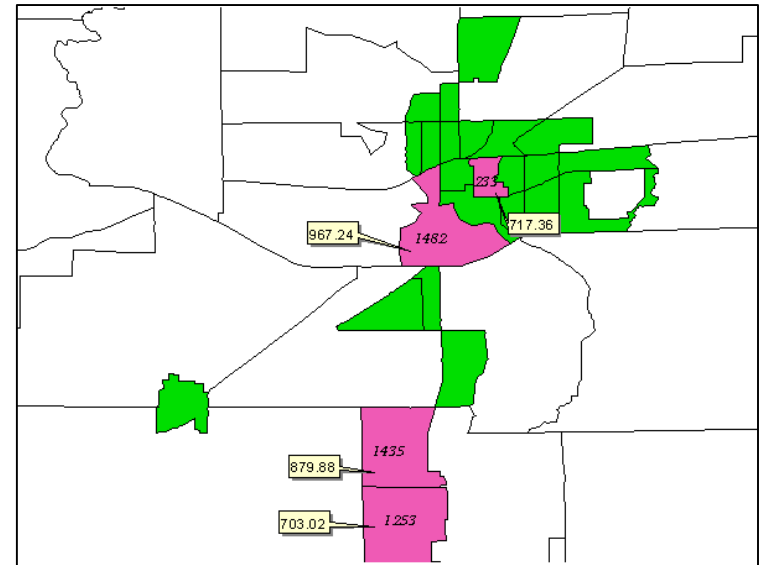
# Compactness

- Geographic compactness is ill-defined by the “I know it when I see it” standard.
  - How spread out is the district?
  - Jagged, irregular borders?



# Contiguous

- A single, unbroken shape.
- Two areas touching at their corners are typically not considered contiguous.
- Terre Haute has annexed areas that are not contiguous to the basic corporate boundary that must be included.



Noncontiguous example

# Equal Populations

- Population is based on 2020 Census figures
- Total population, not voters



# Formula for Determining Ideal District Population

Total Census Population 53,939

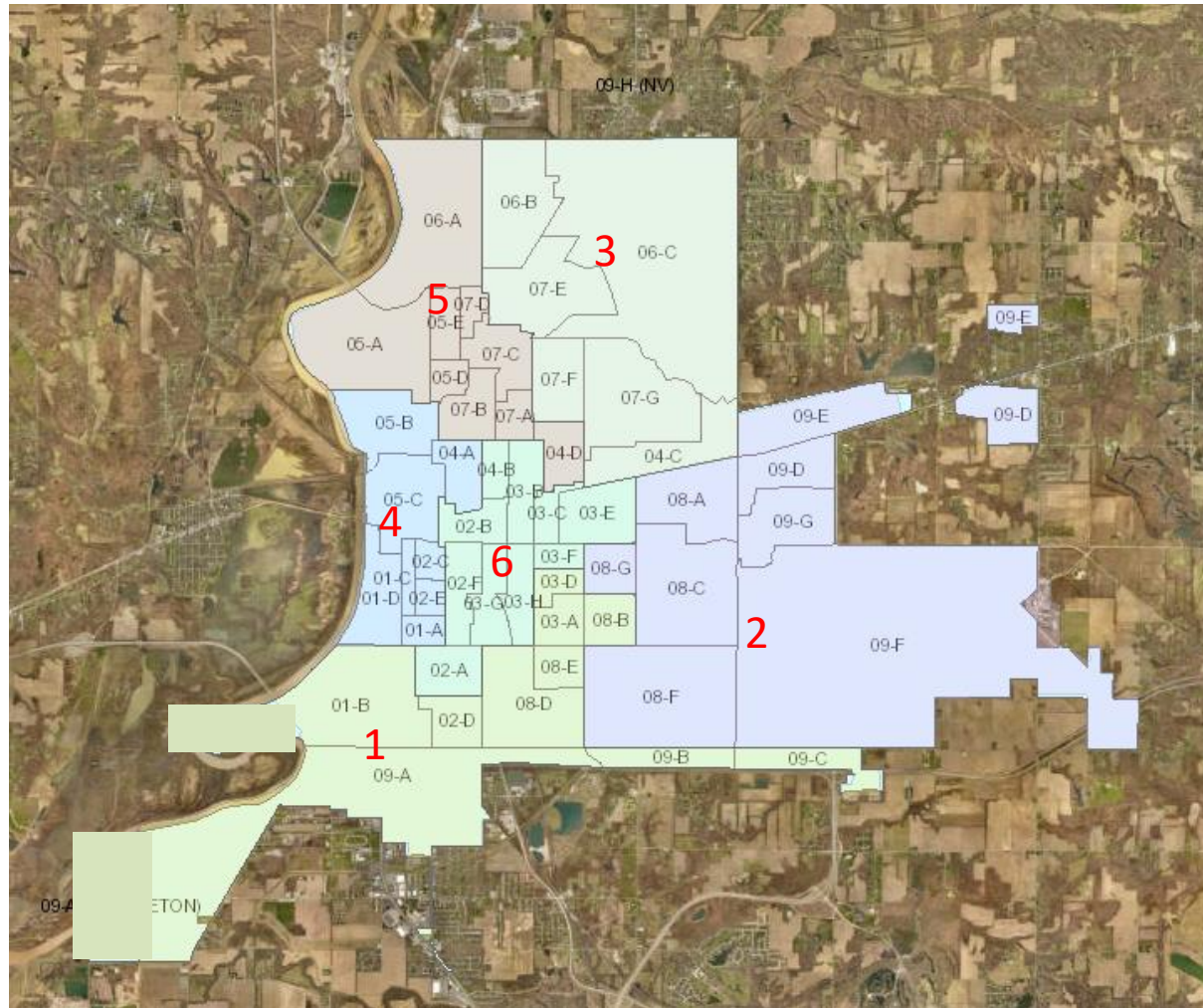
Total Population ÷ # of Districts = Ideal District Size  
 $53,939 \div 6 = 8,990$

**GOAL: 8,990**

# Strive for 10% Deviation

- 10% “rule” is an effort to create “equal” districts
- <10% deviation doesn’t automatically create “equality”
- *Vigo County Republican Central Committee v. Vigo County Commissioners* – redistricting was overturned with only a 3.8% deviation
- ALL factors to be considered

# Current Council Districts





# % Deviation from Ideal Population

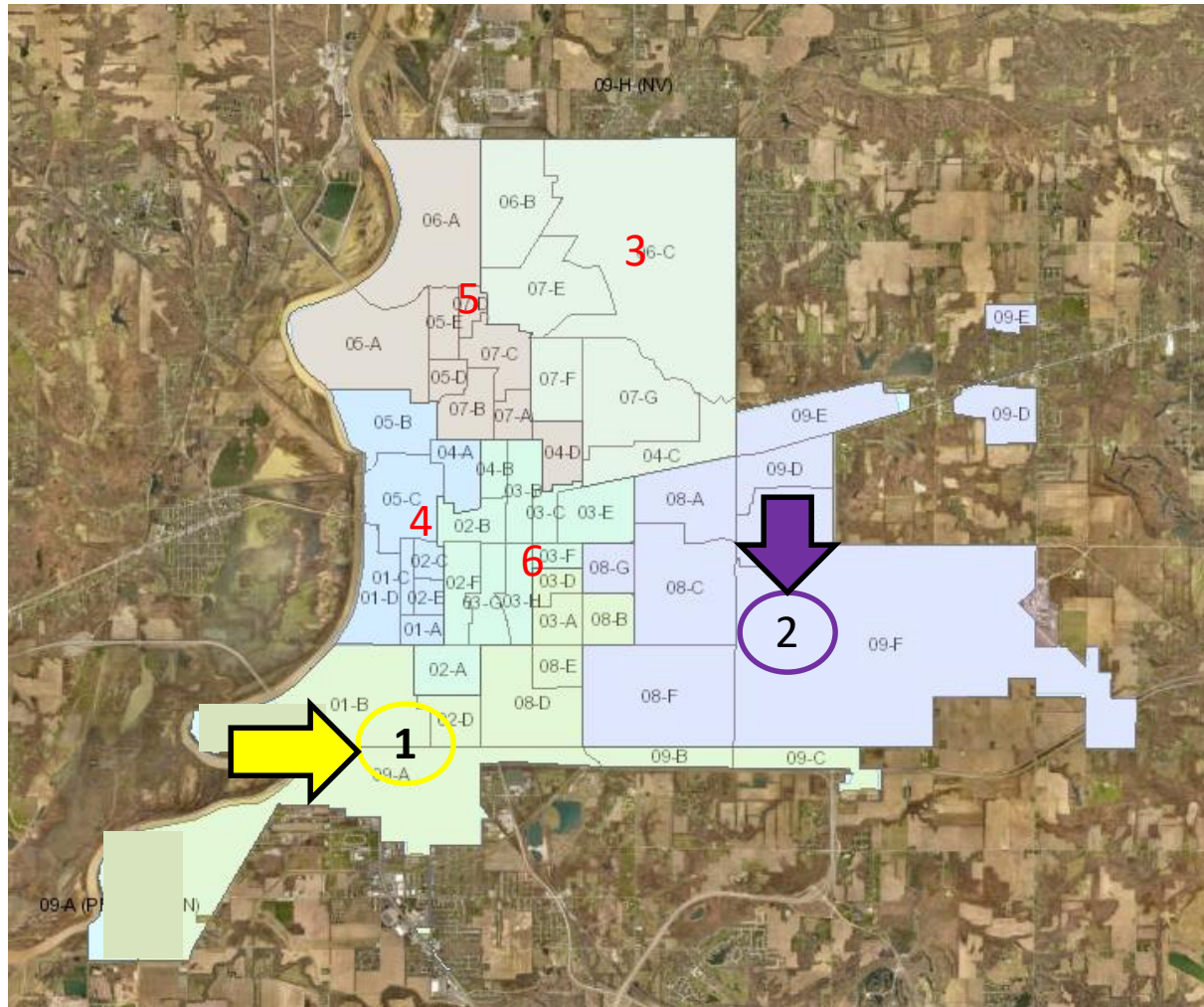
**8,990**

	<b>Population</b>	<b>Pop. Deviation from Ideal</b>	
District 1	8,267	-723	Smallest
District 2	9,714	724	Largest
District 3	8,954	-36	
District 4	9,314	324	
District 5	8,778	-212	
District 6	8,912	-78	

Largest District – Smallest District ÷ Ideal District = % Deviation

$$9,714 - 8,267 = 1,447 \div 8,990 = \mathbf{16\%}$$

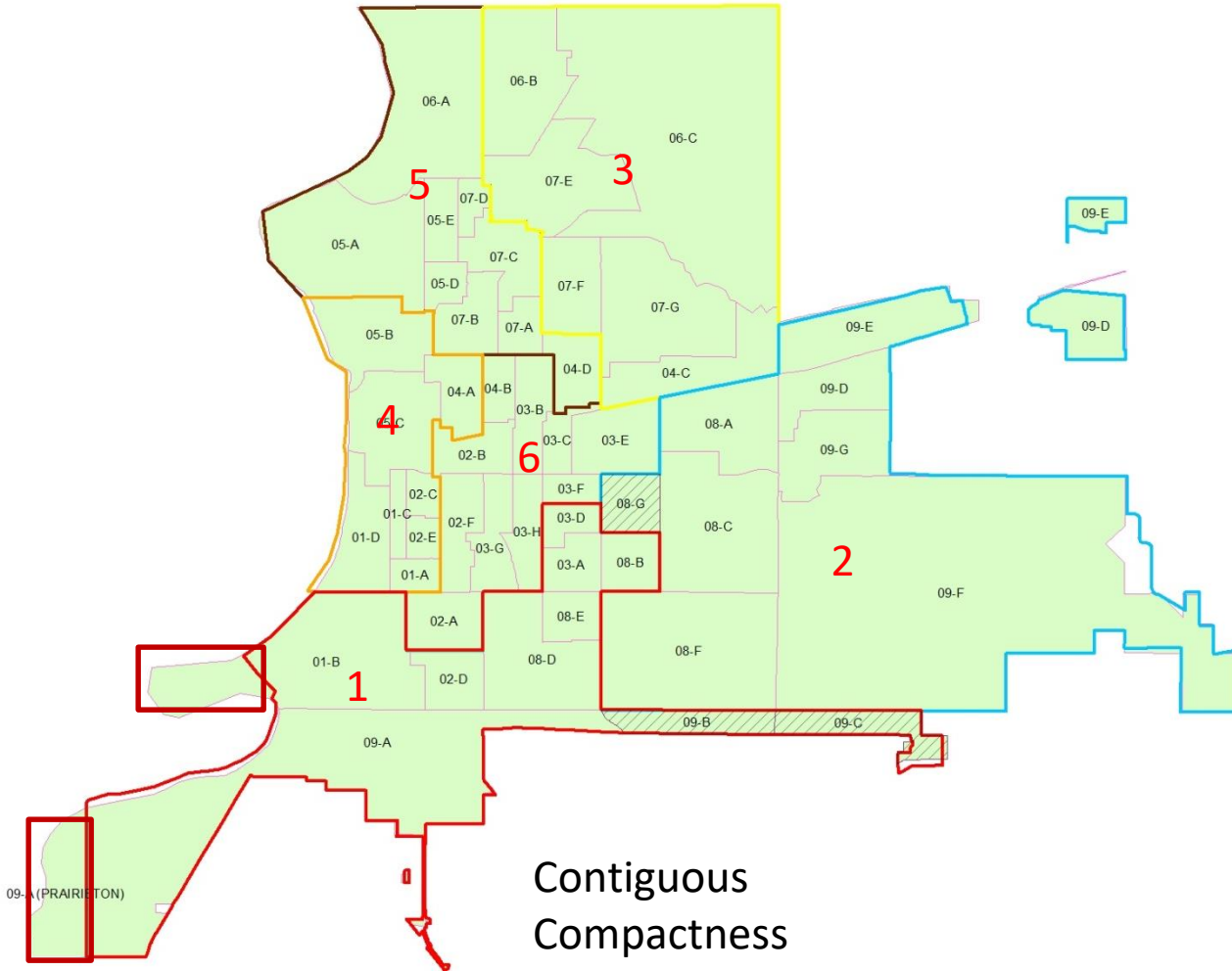
# Current Council Districts



Yellow? = District 1  
Purple = District 2

# Council District Current

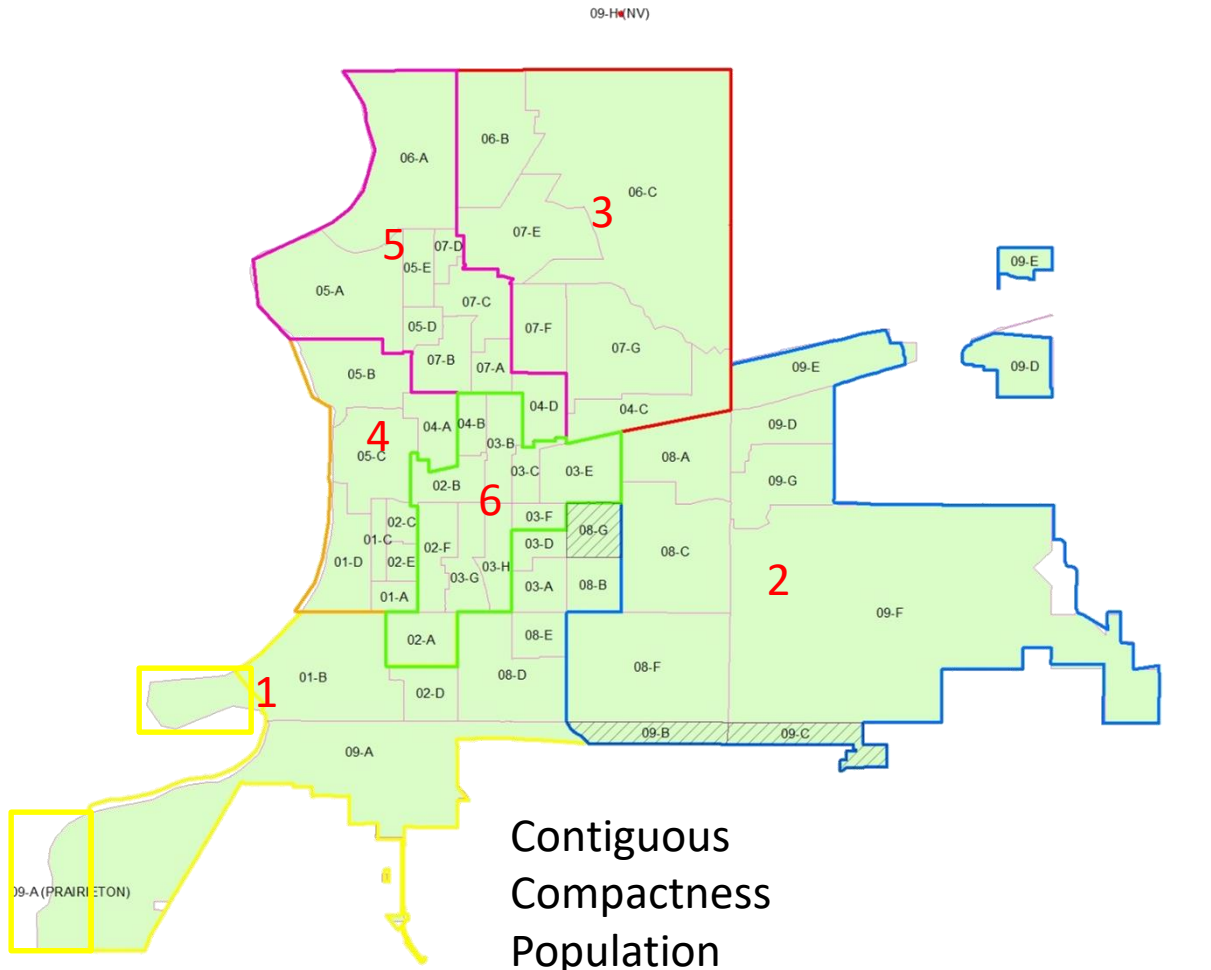
09-H (NV)




Contiguous  
Compactness  
Population

Current	
08 - G	891
09 - B	129
09 - C	9

# Council District New Proposal



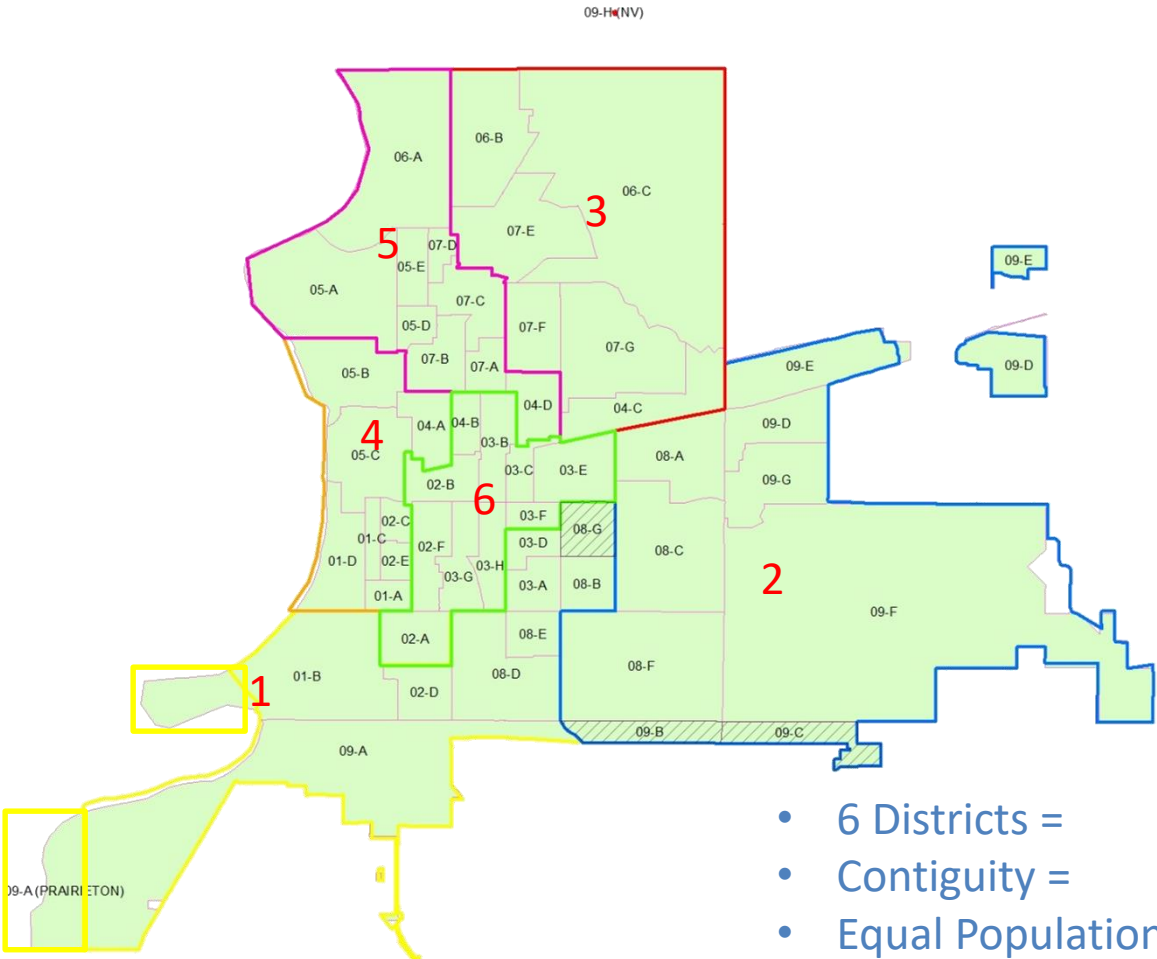
 Proposed Change	
08 - G	891
09 - B	129
09 - C	9

# Redistricting Proposal “swapping”

Three census blocks between District 1 and District 2

Current Population	Proposed Population
D1 8,267	D1 9,026
D2 9,714	D2 8,955
D3 8,954	D3 8,954
D4 9,314	D4 9,314
D5 8,778	D5 8,778
D6 8,912	D6 8,912
<b>TARGET = 8,990</b>	
<i>Current Deviation = 16%</i>	<i>Proposed Deviation = 6%</i>

# Proposed Redistricting and Factors



- 6 Districts =
- Contiguity =
- Equal Population (6% deviation) =
- Does Not Cross Precinct Boundaries =
- Does Not Displace Council Members =
- Compactness =



ANY  
QUESTIONS?